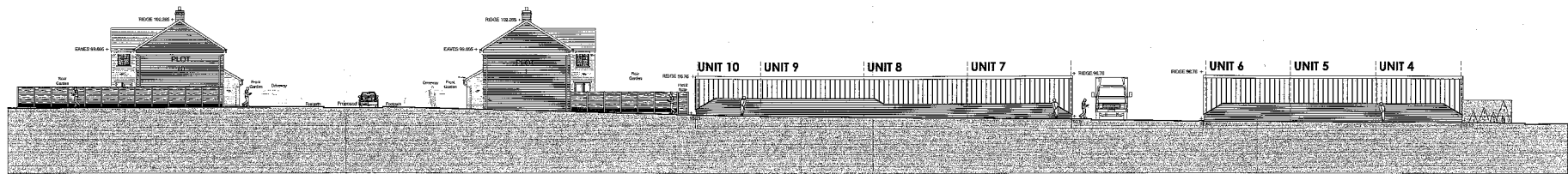
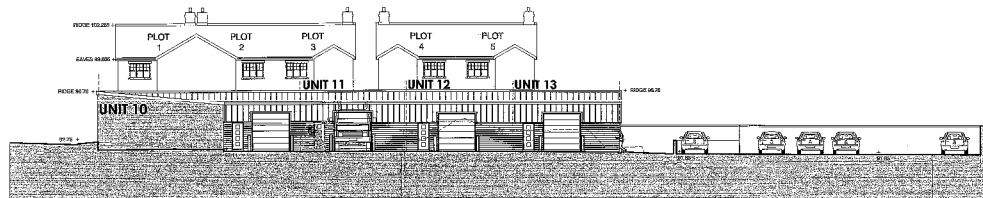


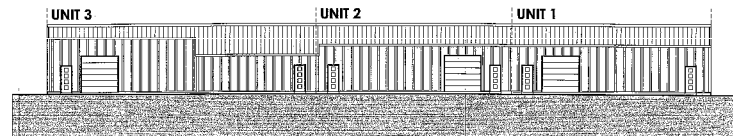
**PROPOSED SECTIONAL ELEVATION A-A**



**PROPOSED TOWNLEY STREET ELEVATION B-B**



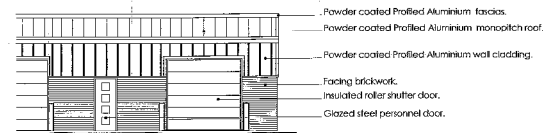
**PROPOSED YARD ELEVATION C-C**



**EXISTING UNIT ELEVATION E-E**



**PROPOSED TOWNLEY STREET ELEVATION D-D**



**PART PROPOSED ELEVATION 1:100**  
(Material Finishes to new industrial Units)

- Powder coated Profiled Aluminium fascias.
- Powder coated Profiled Aluminium monopitch roof.
- Powder coated Profiled Aluminium wall cladding.
- Facing brickwork.
- Insulated roller shutter door.
- Glazed steel personnel door.

**Notes:**

This drawing and design are copyright and may not be reproduced without the written consent of JYM Partnership. All dimensions are to be checked and verified on site prior to commencement of any works, and/or suspension of any drawings. Size of grid dimensions to any structure elements are indicative only. See structural engineers' drawings for actual structural dimensions. Size of tank dimensions for any services elements are indicative only. See service engineers' drawings for actual structural dimensions.

This drawing to be used in conjunction with all relevant Architects' drawings, specifications and/or bills of materials as issued with our Consultants' information. If in doubt please ask.

**DO NOT SCALE FROM THIS DRAWING.**

Scale:	1:200, 1:100 at A1	
Drawn:	JLC, MS	Checked: CM
Date:	January 2012	
Project no.	0922	Rev. 15

**JYM partnership**

Oak House 28 Sceptre Way  
Bamber Bridge Preston PR5 6AW  
Tel: 01772 323666  
Fax: 01772 338611  
Email: jym@jympartnership.co.uk  
www.jympartnership.co.uk

Project: Residential and Commercial Redevelopment of Townley Street & Lyons Lane Mills, Chorley, Lancashire, PR6 0PJ

Client: Elmwood Construction LLP

Drawing title: Proposed Sectional Elevations

Scale: 1:200, 1:100 at A1

Drawn: JLC, MS

Checked: CM

Date: January 2012

Project no. 0922

Rev. 15

CHORLEY COUNCIL CORPORATE SUPPORT SERVICES (PLANNING SERVICES)
REC'D: 15 JAN 2012
FILE
ACKD
ATTN OF
COPIES TO
Rev. Date Revision